



# For the very highest demands – Genuine Accessories.

## Extensive and individual range.

So that the Atego meets your personal ideas of the perfect distribution truck even better: Mercedes-Benz Genuine Accessories. We offer a wide range of large and small options to make your working day better, safer, more comfortable and more efficient. And if there is an Axor among your vehicle fleet, we are sure to have the right accessories at hand.

Our sophisticated logistics ensure every Mercedes-Benz accessory product is available for you as quickly as possible at your dealer – and, if you wish, including installation.

Did you already know that? Our comprehensive product tests ensure that every Mercedes-Benz Genuine Accessory meets our high quality standards. From electromagnetic compatibility to summer and winter testing up to the crash test – only accessory products that pass each of the required tests meet the requirements of practical situations. And only then do they meet yours, too.

You will receive detailed advice from your Mercedes-Benz partner. They will also perform the professional installation upon request.

We use the following model series abbreviations in the catalog:

At4	Atego 4, manufacture year from 2013, model designation 967
At3	Atego 3, manufacture years 2010–2013, model designations 970–976, code XV8
At2	Atego 2, manufacture years 2004–2010, model designations 970–976, code XV1
At1	Atego 1, manufacture years 1998–2004, model designations 970–976
Ax3	Axor 3, manufacture year from 2010
Ax2	Axor 2, manufacture year from 2004
Ax1	Axor 1, manufacture year from 2001

### Table of contents

<b>3</b>	Exterior
<b>30</b>	Interior
<b>48</b>	Electrics/electronics
<b>69</b>	Product tests
<b>73</b>	Index



# The exterior.

Simply look better – with our Genuine Accessories.

First impressions are vital. And that of course applies to your Atego or Axor. This means there is a lot of extras in Mercedes-Benz Genuine Accessories which you can use to give your vehicle not only a completely individual but also bright look. But no matter whether for chrome applications, side windows or wheel accessories, there is definitely something for your truck here.



## Chrome applications, door



[B6 752 0138](#)

Sharpen the profile of your vehicle: Chrome applications for the driver and front passenger side.

<b>Product benefits</b>	To customize and enhance the side of the vehicle
<b>Material</b>	Scratch and weather-resistant plastic with high-quality chrome plating
<b>Installation</b>	Easy adhesive attachment
<b>Cab</b>	L cab
<b>Package contents</b>	Kit for driver and front passenger side

Article designation	Vehicle	Part number
Chrome applications, door	At4, Ax2, Ax1	<a href="#">B6 752 0138</a>

# Roof lamp bracket



B6 752 0222



B6 752 0235

Spot on: The roof lamp brackets are perfectly matched to the shape of the respective cab and form the ideal basis for up to four additional headlamps. For even better illumination of the driving and working area in front of the vehicle and an individual look.

<b>Product benefits</b>	ECE-tested; approved for the European market; resistant to environmental influences, corrosion, stone chipping
<b>Material</b>	High-quality stainless steel
<b>Dimensions</b>	Pipe diameter 60 mm
<b>Package contents</b>	With 4 welded shackles for screwing on additional headlamps, incl. mounting material
<b>Note</b>	When mounting and using roof lamp brackets with additional headlamps please observe the country specific legal requirements

Article designation	Vehicle	Part number
Axor/Atego roof lamp bracket for low roof	At3, At2, At1, Ax3, Ax2, Ax1	<a href="#">B6 752 0222</a>
Axor/Atego roof lamp bracket for high roof	At4, At3, At2, At1, Ax3, Ax2, Ax1	<a href="#">B6 752 0235</a>

Chrome/stainless steel/look

# Roof lamp bracket, additional headlamps



B6 683 0039



Chrome/stainless steel/look



B6 683 0038

Make your star shine brighter: The additional headlamps enhance the appearance of the vehicle and ensure better visibility.

<b>Installation</b>	For all Mercedes-Benz roof lamp brackets
<b>Package contents</b>	1 piece
<b>Note</b>	The national legal regulations for attaching additional headlamps are valid; high beam headlamps are ECE-tested

### Work lamps

For better illumination of the working surface in front of the vehicle. Additional headlamp in modern clear glass look.

<b>Product benefits</b>	Impact-resistant and sturdy housing; flexible holding fixture; chrome ring
<b>Technical data</b>	H1 bulb; power absorption capacity 24 Volts/70 Watt; light reference number 37.5; diameter 22 cm

Article designation	Vehicle	Part number
Work lamps	At4, At3, At2, At1, Ax3, Ax2, Ax1	B6 683 0039

### High-beam headlamp

High-beam headlamp with installed 24 V bulb for attachment to the roof lamp bracket.

<b>Product benefits</b>	Impact-resistant and sturdy housing; high-boost-reflector for uniform and ideal illumination of the roadway; flexible hold systems, chrome ring
<b>Technical data</b>	H1 bulb; power absorption capacity 24 V/70 W; light reference number 17.5; diameter 22 cm

Article designation	Vehicle	Part number
High beam headlamp without position lamp	At4, At3, At2, At1, Ax3, Ax2, Ax1	B6 683 0038

# Roof lamp bracket, additional headlamps



B6 683 0033



B6 683 0034

**Installation** For all Mercedes-Benz roof lamp brackets

**Package contents** 1 piece

**Note** The national legal regulations for attaching additional headlamps are valid; high beam headlamps are ECE-tested

**High beam headlamp with LED position lamps**

Lighting performance: Powerful high beam headlamp with 6 high-performance LEDs and striking night design. The ideal supplement for better light output.

**Product benefits** High-boost reflector for even and ideal illumination of the roadway through the newest computer development; with flexible holding fixture; high beam headlamp with chrome ring; impact-resistant and sturdy housing

**Technical data** H1 bulb; power absorption capacity 24 Volts/70 Watt; light reference number 17.5; diameter 22 cm

Article designation	Vehicle	Part number
High beam headlamp with LED position lamps	At4, At3, At2, At1, Ax3, Ax2, Ax1	B6 683 0033

**High beam headlamp with LED ring**

Strong light that you can rely on. High beam headlamps with LED ring. High Boost Reflector for even and ideal illumination of the roadway. Impact-resistant and sturdy housing.

**Product benefits** High efficiency for optimized light distribution; high beam headlamp with chrome ring

**Material** Reflector vapor-coated with ultra-pure aluminum, weatherproofed

**Technical data** H1 bulb; power absorption capacity 24 Volts/70 Watt; light reference number 17.5; diameter 22.2 cm

Article designation	Vehicle	Part number
High beam headlamp with LED ring	At3, At2, At1, Ax3, Ax2, Ax1	B6 683 0034

Chrome/stainless steel/look

# Roof lamp bracket, additional headlamps



B6 683 0042



B6 683 0043

Chrome/stainless steel/look

<b>Installation</b>	For all Mercedes-Benz roof lamp brackets
<b>Package contents</b>	1 full LED high beam headlamp (incl. installation device), cover, installation instructions
<b>Note</b>	The national legal regulations for attaching additional headlamps are valid; high beam headlamps are ECE-tested

### Full-LED high beam headlamp

Make your star shine brighter: The additional headlamps enhance the appearance of the vehicle and ensure better visibility.

<b>Product benefits</b>	With chrome ring; impact-resistant and sturdy housing; high-boost reflector for even and ideal illumination of the roadway; with flexible holding fixture
<b>Technical data</b>	Power absorption capacity 24 Volts/70 Watt; light reference number 17.5; diameter 23 cm

Article designation	Vehicle	Part number
Full LED high beam headlamp, black/chrome	At4, At3, At2, At1, Ax3, Ax2, Ax1	<a href="#">B6 683 0042</a>
Full-LED high-beam headlamp, chrome/chrome	At4, At3, At2, At1, Ax3, Ax2, Ax1	<a href="#">B6 683 0043</a>



# Roof lamp bracket rotating beacon



B6 683 0035



B6 683 0035

The yellow rotating beacon on the cab roof marks transported loads whose dimensions or weights require particular attention.

**Product benefits** Low power consumption (10 W) thanks to LED technology; approved according to GGVS/ADR regulations; rotating function without moving parts; low installation height; impact-resistant and dirt-resistant sleek light cover; no additional costs for replacement parts and maintenance; system of protection: IPx5K, IPx4k, IPx9k

**Installation** Mount of the Mercedes-Benz roof lamp brackets by means of separately available adapter plate

**Technical data** Operating voltage 10-32 V; total current consumption 0.4 A

**Diameter** 165 mm

**Color** Orange

**Overall height** Approx. 130 mm

**Note** Carrying rotating beacons mounted on the vehicle is reserved for priority road users and special-purpose vehicles

Article designation	Vehicle	Part number
LED rotating beacon	At4, At3, At2, At1, Ax3, Ax2, Ax1	<a href="#">B6 683 0035</a>
Roof lamp bracket adapter plate	At4, At3, At2, At1, Ax3, Ax2, Ax1	<a href="#">B6 752 0155</a>
Cable duct angular screw	At4, At3, At2, At1, Ax3, Ax2, Ax1	<a href="#">B6 752 0198</a>

Chrome/stainless steel/look

## Exterior

# Air horns



[B6 684 8640](#)

Full 2-tone sound: The air horns on the cab roof are a powerful audible warning system.

**Product benefits** Increased road safety through better acoustic perception by other road users

<b>Material</b>	Stainless steel
<b>Dimensions</b>	Horn length approx. 55 and 64 cm
<b>Package contents</b>	Set, comprising two horns incl. covers

Article designation	Vehicle	Part number
Air horn set	At4, At3, At2, At1, Ax3, Ax2, Ax1	<a href="#">B6 684 8640</a>

Chrome/stainless steel/look

# Stainless steel steps



B6 752 0246



B6 752 0251

Always a stylish entrance: With the anti-slip steps made of stainless steel.

**Product benefits** Even when boarding, you will experience a safe and brilliant experience with the slip-resistant steps made of stainless and highly polished stainless steel.

<b>Material</b>	High-gloss polished stainless steel
<b>Installation</b>	Simple replacement of the original step

Article designation	Vehicle	Part number
Stainless steel step, one-step	Atn, Atf, At2, At1	<a href="#">B6 752 0246</a>
Stainless steel step, three-step	Axf, Ax2, Ax1	<a href="#">B6 752 0251</a>

## Stainless steel front bar



B6 752 0152

Sovereign appearance: The robust stainless steel front with vehicle-specific shape emphasizes the distinctive appearance of the vehicle.

**Product benefits** For customization of the vehicle; front protection systems offer additional frontal impact protection for motor vehicles

<b>Cab</b>	2500 mm (code F2H)
<b>Material</b>	High-quality stainless steel
<b>Diameter</b>	Pipe diameter 60 mm
<b>Weight</b>	35 kg
<b>Installation</b>	On the towing device
<b>Package contents</b>	1 front bar, mounting material incl. mounts at the towing eyes, incl. 2 stainless steel brackets for mounting high beam headlamps, Technical Inspection Association report, installation instructions, information label (when tilting the cab). The front bar is supplied without a cable set
<b>Note</b>	Only for Actros long-distance haulage. Homologation in the respective markets must be observed

Article designation	Vehicle	Part number
Stainless steel front bar	At4, At3, At2, At1, Ax3, Ax2, Ax1	B6 752 0152

## Entrance emblem



[B6 752 0123](#)

Elegant detail: Whether illuminated, unlit or with mirrored lettering: The entrance emblem made from stainless steel is a striking eye-catcher.

<b>Product benefits</b>	For customization of the vehicle
<b>Material</b>	High-quality stainless steel
<b>Installation</b>	Adhesive mounting
<b>Dimensions</b>	(W x L x H) 270 x 80 x 0.6 mm

Article designation	Vehicle	Part number
Mercedes-Benz entrance emblem with imprinted lettering	At4, At3, At2, At1, Ax3, Ax2, Ax1	<a href="#">B6 752 0123</a>

Chrome/stainless steel/look

# Stainless steel rear axle cover caps



B6 752 0602

Right upfront even at the back: The high-quality stainless steel rear axle cap rounds off the dynamic design of your vehicle with a distinctive detail.

**Product benefits** Visual upgrade and customization of the vehicle, protects the axle hub against soiling

<b>Material</b>	High-quality stainless steel
<b>Installation</b>	For 57.15 cm (22.5") rear axle
<b>Version</b>	Polished or painted black

**For planetary hub reduction axle HL7 (aluminum or steel rim)**

Article designation	Vehicle	Part number
Stainless steel rear axle cap, polished	At4, At3, At2, At1, Ax3, Ax2, Ax1	<a href="#">B6 752 0601</a>
Stainless steel rear-axle hubcap, painted black	At4, At3, At2, At1, Ax3, Ax2, Ax1	<a href="#">B6 752 0625</a>

**For hypoid axle HL6/HL8 (aluminum rim)**

Article designation	Vehicle	Part number
Stainless steel rear axle cap, polished	At4, At3, At2, At1, Ax3, Ax2, Ax1	<a href="#">B6 752 0602</a>
Stainless steel rear wheel hub cap, painted black	At4, At3, At2, At1, Ax3, Ax2, Ax1	<a href="#">B6 752 0626</a>

**For hypoid axle HL6/HL8 (steel rim)**

Article designation	Vehicle	Part number
Stainless steel rear axle cap, polished	At4, At3, At2, At1, Ax3, Ax2, Ax1	<a href="#">B6 752 0609</a>
Stainless steel rear wheel hub cap, painted black	At4, At3, At2, At1, Ax3, Ax2, Ax1	<a href="#">B6 752 0634</a>



[B6 752 0625](#)

Wheel accessories



[B6 752 0601](#)



[B6 752 0602](#)

## Stainless steel wheel nut caps



[B6 752 0611](#)



[B6 752 0611](#)



[B6 752 0627](#)

Because every detail counts: The wheel nut cap protects the rim and the wheel nuts against damage and sets accents on your vehicle.

**Product benefits** Individualisation of the vehicle and visual enhancement; protects the rims and wheel nuts against damage (front axle)

**Material** High-quality stainless steel

**Version** Polished or painted black

### Made of polished stainless steel

Article designation	Vehicle	Part number
Stainless steel wheel nut cap for 57.15 cm (22.5") steel rims, 10-hole	At4, At3, At2, At1, Ax3, Ax2, Ax1	<a href="#">B6 752 0610</a>
Stainless steel wheel nut cover for 57.15 cm (22.5") alloy rims, 10-hole	At4, At3, At2, At1, Ax3, Ax2, Ax1	<a href="#">B6 752 0611</a>

### Made from stainless steel, painted black, with optional Mercedes star

Article designation	Vehicle	Part number
Stainless steel wheel nut cap for 57.15 cm (22.5") steel rims, 10-hole	At4, At3, At2, At1, Ax3, Ax2, Ax1	<a href="#">B6 752 0627</a>
Stainless steel wheel nut cover for 57.15 cm (22.5") alloy rims, 10-hole	At4, At3, At2, At1, Ax3, Ax2, Ax1	<a href="#">B6 752 0628</a>

# Stainless steel wheel nut caps



B6 752 0611



B6 752 0114

Wheel accessories



B6 752 0612

Elegant closure: The stainless steel wheel nut caps protect the rim and the wheel nuts from damage. These are the shiny details that make the difference.

<b>Product benefits</b>	Individualisation of the vehicle and visual enhancement; protects the rims and wheel nuts against damage (front axle)
-------------------------	---

<b>Material</b>	High-quality stainless steel
<b>Version</b>	Polished

**Made of polished stainless steel**

Article designation	Vehicle	Part number
Stainless steel wheel nut cap for 44,45-cm-(17,5"-) steel rim; 6 hole	At4, At3, At2, At1, Ax3, Ax2, Ax1	<a href="#">B6 752 0113</a>
Stainless steel wheel nut cap for 49.53 cm (19.5") steel rim	At4, At3, At2, At1, Ax3, Ax2, Ax1	<a href="#">B6 752 0114</a>

Constellation for the front axle: wheel nut cap to protect the rim and wheel nuts.

**Made of polished stainless steel, cover made of black plastic, Mercedes star chrome-plated**

Article designation	Vehicle	Part number
Wheel nut cover for 57.15 cm (22.5") alu rims, 10-hole	At4, At3, At2, At1, Ax3, Ax2, Ax1	<a href="#">B6 752 0612</a>
Replacement star for B6 752 0612	At4, At3, At2, At1, Ax3, Ax2, Ax1	<a href="#">B6 601 0124</a>



# Stainless steel wheel nut protective caps



Attractive and practical: Wheel nut protective caps to protect the wheel nuts and for a visual upgrade.

**Product benefits** Visual upgrade and customization of the vehicle, protects the wheel nuts against damage

**Material** High-gloss polished stainless steel

**Note** Wheel nut protective caps for 27 mm size, required for each wheel: 6 units; for 30 mm size, required for each wheel: 10 units; for 32 mm size, required for each wheel: 10 units

B6 752 0621



B6 752 0115



B6 752 0629



**Made of polished stainless steel**

Article designation	Vehicle	Part number
Wheel nut protective caps for size 27 mm	At4, At3, At2, At1, Ax3, Ax2, Ax1	B6 752 0115
Wheel nut protective caps for size 30 mm	At4, At3, At2, At1, Ax3, Ax2, Ax1	B6 752 0116
Wheel nut protective caps for size 32 mm	At4, At3, At2, At1, Ax3, Ax2, Ax1	B6 752 0635

**Made of stainless steel, powder-coated black**

Article designation	Vehicle	Part number
Wheel nut caps for size 32 mm width across flats (steel rim only)	At4, At3, At2, At1, Ax3, Ax2, Ax1	B6 752 0629

**Wheel nut protective cap puller**

Pulling pliers for wheel nut protective caps, for all sizes

Article designation	Vehicle	Part number
Wheel nut protective cap puller	At4, At3, At2, At1, Ax3, Ax2, Ax1	B6 752 0631

# Light alloy wheels



B6 601 0007



A 001 400 85 02

Wheel accessories

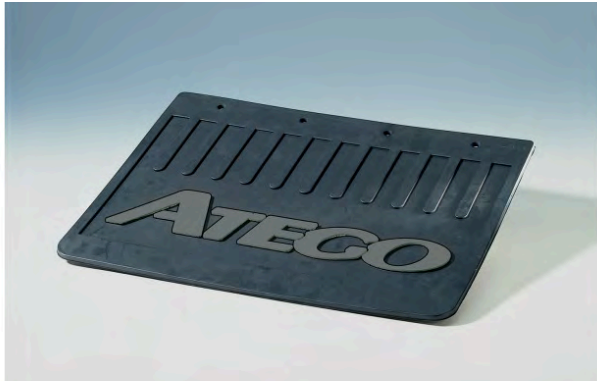
Great look and increased economy: the light alloy rim "Speedline" is approximately 40% lighter and reduces brake wear.

**Product benefits** Payload gain by reducing the tare weight of the vehicle; enhancement of the vehicle look

**Material** Aluminum

Article designation	Vehicle	Part number
"Speedline" light alloy rim; 57.15 cm (22.5") x 9.00"; 28.2 kg	At4, At3, At2, At1, Ax3, Ax2, Ax1	B6 601 0007
"Speedline" light alloy rim; 57.15 cm (22.5") x 8.25"; 27.35 kg	At4, At3, At2, At1, Ax3, Ax2, Ax1	A 001 400 85 02
Light-alloy wheel "Speedline", 44.45 cm (17.5") x 6.75"; 14.6 kg	At4, At3, At2, At1	B6 601 0043
Wheel nuts for front axle	At4, At3, At2, At1, Ax3, Ax2, Ax1	A 000 401 13 72
Wheel nuts for rear axle	At4, At3, At2, At1, Ax3, Ax2, Ax1	A 000 401 10 72
Chrome-plated plastic cap for covering the wheel nuts on front axle + rear axle	At4, At3, At2, At1, Ax3, Ax2, Ax1	A 000 401 01 24
Valve for replacement purposes	At4, At3, At2, At1, Ax3, Ax2, Ax1	A 000 401 71 13
Set of wheel bolts 6 pcs. for 44,45 cm (17,5") x 6,75" rims, for front axle	At4, At3, At2, At1, Ax3, Ax2, Ax1	A 000 400 02 72
Wheel stud set, 6 pcs. for 44.45 cm (17.5") x 6.75" rims, for rear axle	At4, At3, At2, At1, Ax3, Ax2, Ax1	A 000 400 01 72

## Mud flap



B6 653 0009

Clean-cut affair: The rear side of the mud flap has been provided with a special profile in order to channel splash water and to effectively reduce “spray formation”.

<b>Product benefits</b>	Oil, weather, ozone resistant, high tearing resistance
<b>Material</b>	Mud flap made of high-quality rubber blend (Quality 10296/A) with vulcanized-in, white, "Atego" lettering with no discoloration
<b>Installation</b>	Easy installation: front wheel mud flap with mounting perforation, 378 x 190 mm; rear wheel mud flap with mounting perforation, 378 x 250 mm

Article designation	Vehicle	Part number
Mud flap, front	At4, At3, At2, At1	<a href="#">B6 653 0000</a>
Mud flap, rear	At4, At3, At2, At1	<a href="#">B6 653 0009</a>

## Valve extensions



B6 752 0622

Easy, practical and safe: Valve extension for air pressure monitoring without needing to remove the full wheel trim. Multi-layered design for even greater safety. Available in three lengths.

Article designation	Vehicle	Part number
Valve extension 75 mm	At4, At3, At2, At1, Ax3, Ax2, Ax1	<a href="#">B6 752 0622</a>
Valve extension 145 mm	At4, At3, At2, At1, Ax3, Ax2, Ax1	<a href="#">B6 752 0623</a>
Valve extension 185 mm	At4, At3, At2, At1, Ax3, Ax2, Ax1	<a href="#">B6 752 0624</a>

# Air pressure gage



[A 000 583 36 47](#)

The air pressure gauge is operated with a lithium battery.

<b>Product benefits</b>	Easy checking of the tire air pressure with an easy to read display
<b>Technical data</b>	Tire pressure testing range: approx. 0.15 - 10 bar, maximum deviation +/- 0.07 bar
<b>Property</b>	Display optionally in bar, psi, kPa or kg/cm <sup>3</sup> , integrated LED lighting, automatic shutoff when not in use

Article designation	Vehicle	Part number
Air pressure gauge, digital	All model series	<a href="#">A 000 583 36 47</a>

## Windshield wipers with telescoping handle



B6 753 0143

A clean thing: Windshield wipers consisting of cleaning sponge and puller for quick and easy window cleaning of your truck. Streak-free wiping due to the tried and tested sealing lip and aluminum rail. With telescopic aluminum handle specially designed for high and large side windows.

**Product benefits** Quick and easy cleaning of even higher windows; rubber strip effectively removes the remaining water drops on windows

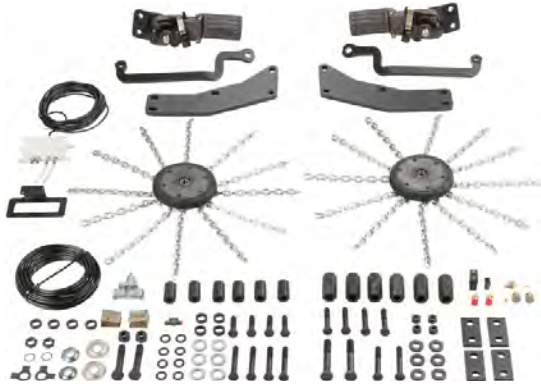
**Dimensions** Infinitely variable length from 70 to 125 cm, width: 25 cm

**Material** Handle made from aluminum, cleaning sponge made from natural rubber

**Additional information** Made in Germany

Article designation	Vehicle	Part number
Windshield wipers with telescoping handle	All model series	B6 753 0143

# Automatic tire chains



The automatic tire chains are switched on or deactivated at the press of a button in the cab when moving off or during the journey (up to 50 km/h) on smooth and icy roads and moved back to their original position. The smooth-running and tire-protecting rotation chains have a sturdy suspension.

Automatic tire chains

With the rotation chains for your truck, you stay safely on track in both ice and snow.

**Product benefits** Reduced risk of accidents thanks to 30% better traction of the drive wheels on smooth and slippery surfaces; easily engageable during the journey; high economic efficiency thanks to long service life; insensitive to temperature and oxidation-resistant

<b>Version</b>	Weight-optimized
<b>Weight</b>	Gross weight approx. 25 kg per side
<b>Area of use</b>	On roads packed with ice or covered with snow
<b>Note</b>	2-year guarantee
<b>Specification and approval</b>	Only for vehicles with air-sprung rear axle
<b>Technical data</b>	Operating speed of 3 km/h to max. 50 km/h; activation speed from 3 km/h or when wheels are spinning; supply voltage 24 V, fuse 8 A; compressed air supply 7 to 10 bar
<b>Exclusions B6 758 0950</b>	967.020, 967.021, 967.022, 967.023, 967.024 and all single-tired vehicles
<b>Exclusions B6 758 0951</b>	967.000, 967.001, 967.002, 967.003, 967.004, 967.201, 967.202 and all single-tired vehicles

Article designation	Vehicle	Part number
Automatic tire chain for Atego 967 air-sprung, bolt-on kit, chain wheel set 170/18, basic unit	At4	<a href="#">B6 758 0950</a>
Automatic tire chain for 967 leaf-sprung, bolt-on kit, chain wheel set 170/18, basic unit	At4	<a href="#">B6 758 0951</a>

## Automatic tire chains



Always a tire length ahead: with automatic tire chains for snowy winter days. The automatic tire chains are a traction aid that can be engaged when driving. The automatic tire chains are attached to the drive axle and connected to the vehicle's compressed-air system. When the switch in the cab is pressed, the chain wheels are pressed onto the inner side of the tire on the drive axle via a swivel arm. The drive wheels of the vehicle now set the pressed-on chain wheels into motion. Centrifugal force moves the chain skeins attached to the chain wheels underneath the wheels of the drive axle so that the driven wheels gain solid traction.

<b>Technical data</b>	Depending on the model involved, a system weight of approx. 30-45 kg
<b>Validity</b>	Approved up to 50 km/h
<b>Package contents</b>	The vehicle sets consist of: adapter set, 2 x aluminum sprockets with rubber-lined tread, 2 cylinders with lever system and control system, all required connections, valves, switches and lines

Article designation	Vehicle	Part number
Automatic tire chain, as of 18 t air-sprung for 4 x 2, 6 x 2, 6 x 2/4, 295/80, 315/70 or 315/60 R 22.5	Ax2, Ax1	<a href="#">B6 758 0930</a>
Automatic tire chain, as from 18 t, air-sprung for 4 x 2, 6 x 2, 6 x 2/4, 275/70, 285/60 or 315/60 R 22.5	At2, At1, Ax2, Ax1	<a href="#">B6 758 0931</a>
Automatic tire chain, leaf sprung for 4 x 2, 4 x 2, 315/70 R 22.5	At2, At1	<a href="#">B6 758 0946</a>
Automatic tire chain, air-sprung for 4 x 2, 2/2 or 315/70 R 22.5	Ax2, Ax1	<a href="#">B6 758 0943</a>
Automatic tire chain, as from 6.5 t, leaf-sprung for HL2 axis, as from 215/75 R 17.5	At2, At1	<a href="#">B6 758 0932</a>
Automatic tire chain, as from 6.5 t, air-sprung for HL2 and HL4 axes, as from 215/75 R 17.5	At2, At1	<a href="#">B6 758 0933</a>
Automatic tire chain, as from 6.5 t, leaf-sprung for HL4 axis, as from 285/70 R 19.5	At3, At2, At1	<a href="#">B6 758 0934</a>

### Sprockets for replacement needs

Article designation	Vehicle	Part number
Sprocket, 195 mm	At2, At1, Ax2, Ax1	<a href="#">B6 758 0901</a>
Sprocket, 160 mm	At2, At1, Ax2, Ax1	<a href="#">B6 758 0903</a>

# Fifth wheel couplings



B6 789 3703

Easy coupling and uncoupling: Mercedes-Benz offers you a wide range of standard fifth wheel couplings, as well as low-maintenance fifth wheel couplings that don't need to be manually lubricated.

<b>Overall height</b>	150 mm / 250 mm
<b>Fifth wheel load</b>	20 t
<b>Maximum traction weight</b>	65 t

### Sturdy 2" lightweight standard fifth wheel coupling, JSK37C

<b>Product benefits</b>	Sturdy design; shock absorbing rubber mount; long handle, manually lubricated or low-maintenance
-------------------------	--

<b>Note</b>	Suitable for 6 x 2 and 6 x 4 vehicles in long-distance haulage, in heavy-duty service on rough roads and on construction sites. Only usable with mounting plate
-------------	---

Article designation	Vehicle	Part number
Manually lubricated, 150 mm	At4, At3, At2, At1, Ax3, Ax2, Ax1	<a href="#">B6 789 3703</a>
Low-maintenance, 150 mm	At4, At3, At2, At1, Ax3, Ax2, Ax1	<a href="#">B6 789 3710</a>
Low-maintenance, 250 mm	At4, At3, At2, At1, Ax3, Ax2, Ax1	<a href="#">B6 789 3712</a>

### Weight-optimized 2" lightweight standard fifth wheel coupling, JSK42

<b>Product benefits</b>	Saves weight (approx. 50-60 kg) and costs, since no assembly plate is required; one-hand operation and longer handle; manually lubricated or low-maintenance
-------------------------	--

<b>Note</b>	Suitable for 4 x 2 vehicles in long-distance and distribution haulage
-------------	---

Article designation	Vehicle	Part number
Manually lubricated, 150 mm	At4, At3, At2, At1, Ax3, Ax2, Ax1	<a href="#">B6 789 3742</a>
Low-maintenance, 150 mm	At4, At3, At2, At1, Ax3, Ax2, Ax1	<a href="#">B6 789 3744</a>



# TruckCare



Brilliant gloss and clear visibility: The care set contains care products that you will need when cleaning your vehicle - both on the outside and the inside.

**Product benefits** Specifically developed for Mercedes-Benz vehicles; tested for material and environmental compatibility

**Package contents** Cockpit lotion, windshield cleaning agent for inside, fast-acting cleaner, polishing cloth, pocket

Article designation	Vehicle	Part number
Truck careset	All model series	<a href="#">B6 684 8609</a>

## Lockable tank cap (code K5M)



A 000 470 44 05

Increased protection: the lockable tank cap makes life hard for fuel thieves. Simple and comfortable handling ensured by one-key system for fuel tank.

**Product benefits** Protects the tank content against theft; easy and comfortable handling with 1-key system for the fuel tank

**Package contents** Is supplied without a lock cylinder. Cylinder with key has to be ordered separately

Article designation	Vehicle	Part number
Lockable tank cap for AdBlue®	At4, At3, At2, At1, Ax3, Ax2, Ax1	<a href="#">A 000 470 44 05</a>
Lockable fuel filler cap for diesel	At4, Ax3, Ax2, Ax1	<a href="#">A 000 470 50 05</a>

# Mobile LED traffic hazard management light set



Whether breakdown or accident: The LED breakdown guidance set makes the trailing traffic aware of the hazardous area in good time. The five bright LED light elements are installed in no time at all.

<b>Product benefits</b>	For quick protection of vehicles in dangerous situations
<b>Package contents</b>	5 LED light spots in a combined transport and charging container with charging cable
<b>Technical data</b>	Flashing frequency 60 flashes/minute, operating voltage 10-30 Volts; rechargeable via on-board electrical system of the vehicle using 2-pin vehicle connector (cigarette lighter plug); the power supply of the LED guide piece is a NiCd battery pack, complete charging of the rechargeable battery takes around 14 hours, period of operation: at least 12 hours

Article designation	Vehicle	Part number
Mobile LED breakdown set	For all model series	<a href="#">B6 653 0015</a>

# Side window wind deflector



B6 753 0017



Wind deflector



No turbulences: Side window wind deflectors for draft-free driving even with the windows open. With a custom-fit cutout for the curb view mirror on the co-driver side.

<b>Product benefits</b>	Protected from airstream when window open; exact fit
<b>Material</b>	Acrylic glass, 3 mm thickness
<b>Color</b>	Available in tinted and clear variants
<b>Package contents</b>	Set for driver and passenger side, incl. mounting material

**Side window wind deflector**

Article designation	Vehicle	Part number
Side window wind deflectors for left-hand drive vehicle, pair, tinted	At4, At3, At2, At2, At1, Ax3, Ax2, Ax1	<a href="#">B6 753 0014</a>
Side window wind deflectors for RHD, pair, tinted	At4, At3, At2, At2, At1, Ax3, Ax2, Ax1	<a href="#">B6 753 0017</a>
Side window wind deflectors for LHD, pair, clear	At4, At3, At2, At2, At1, Ax3, Ax2, Ax1	<a href="#">B6 753 0031</a>

**For replacement needs**

Article designation	Vehicle	Part number
Side window wind deflector mounting kit for replacement needs	At4, At3, At2, At2, At1, Ax3, Ax2, Ax1	<a href="#">B6 753 0016</a>



## Mercedes-Benz Genuine Parts

More than one hundred years of experience in vehicle and part development make our parts what they are - Mercedes-Benz Genuine Parts. They have been specially developed and tested in accordance with the specification requirements of Mercedes-Benz. Exact fit ensures ease of installation without rework. Mercedes-Benz Genuine Parts stand out for their high quality and reliability - so that your Mercedes-Benz can always remain an original.



Advantages at a glance:

- The latest state of technical development and consistent quality assurance
- Pan-European warranty with long-term availability even after series-production period
- Global supply availability with short procurement times through efficient logistics
- Customer-oriented portfolio of new parts, replacement parts and repair solutions
- Fulfillment of Mercedes-Benz requirements in terms of safety, economy and environmental protection



# The interior.

Comfort in the cab you deserve.

We offer many additional extras as Genuine Accessories for all those who are at home on the road - for a beautiful home and more rest and sleep comfort.



## Stowage tray



B6 667 2031

Tidy mind is half the battle - also in the cockpit: Practical stowage tray with large compartments for everything that must be within reach.

<b>Product benefits</b>	Extension of the stowage option offered in the cab; orderly accommodation with optimized arrangement, including for stowing small utensils.
<b>Installation</b>	Easy mounting on the dash support
<b>Dimensions</b>	(L x W x H) 690 x 360 x 60 mm

Article designation	Vehicle	Part number
Cockpit stowage tray	At4, At3, At2, At1, Ax3, Ax2, Ax1	B6 667 2031

## Key ring



B6 667 2041

Practical and comfortable: The key ring has been specially designed for the multifunction key for your truck and this can be easily attached to it. Other keys can also be attached to the key ring.

<b>Product benefits</b>	Practical storage of keys specially for the multifunction key
<b>Material</b>	Made from felt fabric, with Mercedes-Benz logo
<b>Dimensions</b>	(W x L x H) 150 x 35 x 5 mm

Article designation	Vehicle	Part number
Key ring	For all model series	B6 667 2041

# LED reading lamp



Practical additional lighting in cockpit: reading lamp with white LED and flexibly adjustable gooseneck.

<b>Product benefits</b>	Low power consumption and long service life
<b>Material</b>	Housing, cover made of black plastic, base painted in black
<b>Dimensions</b>	Length approx. 400 mm
<b>Connections</b>	Electrical connection through 120 mm long line
<b>Technical data</b>	24 Volts, 3 Watt, power consumption = approx. 0.12 amps
<b>Package contents</b>	Incl. light source, mounting clip and mounting screws, supplied with unconnected cable end for individual mounting
<b>Installation time</b>	Approx. 30-45 minutes

Article designation	Vehicle	Part number
LED reading lamp	At4, At3, At2, At1, Ax3, Ax2, Ax1	<a href="#">B6 682 8805</a>



# Bedding sets



B6 787 3695



B6 787 2424

Relaxing sleep meets beautiful design.

<b>Product benefits</b>	High abrasion resistance, breathable, crease-resistant, keeps its shape, lightfast, ecologically compatible in accordance with Oeko-Tex Standard 100, suitable for allergy sufferers
<b>Material</b>	Covers and pillows filled with polyester-cotton mixture; duvet covers made of soft fine fabric, washable up to 60 °C

**"Break" bedding set in barely inflammable quality**

<b>Note</b>	Filling is not barely inflammable
-------------	-----------------------------------

Article designation	Vehicle	Part number
Bedding set (cushion cover and duvet cover)	At4, At3, At2, At1, Ax3, Ax2, Ax1	B6 787 3695

**"Checkerboard" bedding set**

Article designation	Vehicle	Part number
Bedding set (cushion cover and duvet cover, each with filling)	At4, At3, At2, At1, Ax3, Ax2, Ax1	B6 787 2424
Duvet cover, 135 x 200 cm	At4, At3, At2, At1, Ax3, Ax2, Ax1	B6 787 2443
Cushion cover 60 x 60 cm	At4, At3, At2, At1, Ax3, Ax2, Ax1	B6 787 2444
Filling for cushion cover, 60 x 60 cm	At4, At3, At2, At1, Ax3, Ax2, Ax1	B6 787 2058
Filling for bed cover, 135 x 200 cm	At4, At3, At2, At1, Ax3, Ax2, Ax1	B6 787 2059

# Bedding sets



B6 787 2130



B6 787 2422, B6 787 2423



B6 787 2056, B6 787 2057

Bed accessories

## "Plaid-patterned" bedding set

For relaxing sleep.

**Property** Washable at up to 60 °C

**Material** Made from elegant fabric that is soft to the touch

Article designation	Vehicle	Part number
Bedding set (cushion cover and duvet cover, each with filling)	At4, At3, At2, At1, Ax3, Ax2, Ax1	<a href="#">B6 787 2130</a>
Duvet cover, 135 x 200 cm	At4, At3, At2, At1, Ax3, Ax2, Ax1	<a href="#">B6 787 2055</a>
Cushion cover 60 x 60 cm	At4, At3, At2, At1, Ax3, Ax2, Ax1	<a href="#">B6 787 2054</a>
Filling for cushion cover, 60 x 60 cm	At4, At3, At2, At1, Ax3, Ax2, Ax1	<a href="#">B6 787 2058</a>
Filling for bed cover, 135 x 200 cm	At4, At3, At2, At1, Ax3, Ax2, Ax1	<a href="#">B6 787 2059</a>

## Neck bolster and travel neck pillow

Ideal for a nap and for relaxing when reading or watching television. Matches bedding design.

**Material** 100% cotton

Article designation	Vehicle	Part number
Bolsters for "checkerboard" bedding set	At4, At3, At2, At1, Ax3, Ax2, Ax1	<a href="#">B6 787 2422</a>
Crescent-shaped cushion for "checkerboard" bedding set	At4, At3, At2, At1, Ax3, Ax2, Ax1	<a href="#">B6 787 2423</a>
Bolsters for "plaid-patterned" bedding set	At4, At3, At2, At1, Ax3, Ax2, Ax1	<a href="#">B6 787 2056</a>
Neck pillow for plaid bedding set	At4, At3, At2, At1, Ax3, Ax2, Ax1	<a href="#">B6 787 2057</a>

## Molton overlays and fitted sheets



[B6 787 2050](#), [B6 787 2118](#)

The functional molleton layer made of pure cotton protects the mattress, stores moisture and improves lying comfort.

**Fitted bed sheets in fine jersey quality made from pure, high-quality cotton**

<b>Material</b>	100 % cotton, fine jersey fabric
<b>Property</b>	Washable at up to 60 °C

Article designation	Vehicle	Part number
Fitted sheet for upper bunk, 1865 x 700 mm	Ax3, Ax2, At4, At3, At2	<a href="#">B6 787 2445</a>
Fitted sheet for lower bunk, 2100 x 685 mm	Ax3, Ax2, At4, At3, At2	<a href="#">B6 787 2447</a>

# Floor mats



### Rubber floor mats

Pulled up surrounding edge protects the footwell against soiling, driver mat with textile wear protection in heel area.

**Product benefits** Custom-fit for the cab, high-quality appeal, high wear resistance and resistance to oil, cleaning of cab made easier

<b>Color</b>	Anthracite
<b>Material</b>	Hard-wearing natural rubber

### Left-hand drive vehicle

Article designation	Vehicle	Part number
Driver's side	At4, At3, At2, At1, Ax2, Ax1	<a href="#">B6 768 0118</a>
Co-driver's side	At4, At3, At2, At1, Ax2, Ax1	<a href="#">B6 768 0119</a>
Center mat	At4, At3, At2, At1, Ax2, Ax1	<a href="#">B6 768 0120</a>

### Velour floor mats

Decorative protection: The hard-wearing floor mats protect the interior from becoming damaged or soiled. The material creates a pleasant living and working environment. No slipping thanks to back coating. Available in different materials for all cab and seat variants. Easy to clean.

**Product benefits** Pearl velour carpet quality, without flex additives and solvent-free.  
Center mats match the floor mats.

<b>Color</b>	Anthracite
<b>Material</b>	Hard-wearing natural rubber

Article designation	Vehicle	Part number
Driver's side	At4, At3, At2, At1, Ax3, Ax2	<a href="#">B6 768 1216</a>
Passenger side	At4, At3, At2, At1, Ax3, Ax2	<a href="#">B6 768 1213</a>
Large center mat, tunnel insert	At4, At3, At2, At1, Ax3, Ax2	<a href="#">B6 768 1215</a>
Small center mat, tunnel insert	At4, At3, At2, At1, Ax3, Ax2	<a href="#">B6 768 1214</a>
Center mat	Ax3, Ax2	<a href="#">B6 768 1218</a>
Center mat, tunnel insert	Ax1	<a href="#">B6 768 1202</a>
Velour floor mat for Axor 1, driver's side, left-hand drive vehicle	Ax1	<a href="#">B6 768 1200</a>
Velour floor mat for Axor 1, co-driver's side, left-hand drive vehicle	Ax1	<a href="#">B6 768 1201</a>

Floor mats



## Ribbed floor mats



Ribbed floor mats cut to size for custom fit in cab. Driver floor mat reinforced in pedal area with plastic wear protection.

<b>Product benefits</b>	Non-skid backing; simplified cleaning of the interior; suitable for steam jets; flame-retardant materials
<b>Color</b>	Anthracite gray
<b>Material</b>	100% polypropylene

### Left-hand drive vehicle

Article designation	Vehicle	Part number
Driver's side	At4	<a href="#">B6 768 3211</a>
Co-driver's side	At4	<a href="#">B6 768 3212</a>
Driver's side	At3, At2, At1, Ax2, Ax1	<a href="#">B6 768 3049</a>
Co-driver's side	At3, At2, Ax2	<a href="#">B6 768 3209</a>
Driver side	Ax1	<a href="#">B6 768 3024</a>
Passenger side	Ax1	<a href="#">B6 768 3025</a>
Passenger side	At1, Ax1	<a href="#">B6 768 3050</a>

# Refrigerator boxes



A 967 830 00 60 7D53

The refrigerator box is permanently mounted between the driver and the co-driver's seat on the engine tunnel. Integrated into the two-piece lid is a clamping device for fixing paper. Four upright 1,5-liter bottles can be stored in their own cooling segment in the illuminated refrigerator box. The second, separated cooling segment can be used for food. A control panel on the rear can be used to activate the refrigerator box and set the inside temperature. A battery rundown protection system is installed. The cooling output can be regulated using a thermostat - irrespective of the ambient temperature.

### Compressor cool box

<b>Product benefits</b>	Increased driver comfort and well-being with drinks and food carried in the vehicle
<b>Cab</b>	S, L cab
<b>Operating voltage</b>	12/24 V; average power consumption: approx. 35 W
<b>Weight</b>	12 kg
<b>Dimensions</b>	(L x W x H) approx. 550 x 260 x 440 mm
<b>Capacity</b>	Approx. 23 l

Article designation	Vehicle	Part number
Mounting kit	At3, At2, Ax2	<a href="#">A 967 830 00 14</a>
Kompressor-Kühlbox (Code Y1U/F84)	At3, Ax3	<a href="#">A 967 830 00 60 7D53</a>

### Mobile refrigerator box

Cooling and heating in a thermo-electric refrigerator box with removable lid and energy-saving circuit.

<b>Temperature range</b>	Cooling: to 27°C at ambient temperature; heating: to 65°C
<b>Weight</b>	7,3 kg
<b>Dimensions</b>	(L x W x H) approx. 450 x 420 x 300 mm
<b>Capacity</b>	20 l

Article designation	Vehicle	Part number
Mobile refrigerator box	At4, At3, At2, At1, Ax3, Ax2, Ax1	<a href="#">B6 667 2040</a>



B6 667 2040

## Manual coffee maker, 24 Volt (for pads)

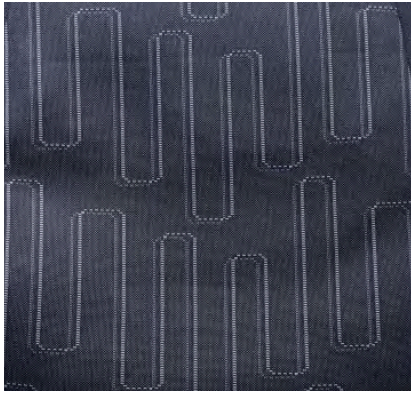


Take a break! Enjoy your favorite coffee in your truck. No matter whether you'd rather a large (110 ml) or a small (80 ml) cup of coffee with standard coffee pads. Your coffee will be ready within 4 minutes. Power is supplied for the coffee maker via the 24 volt cigarette lighter. The handy coffee maker fits in the beverage holder.

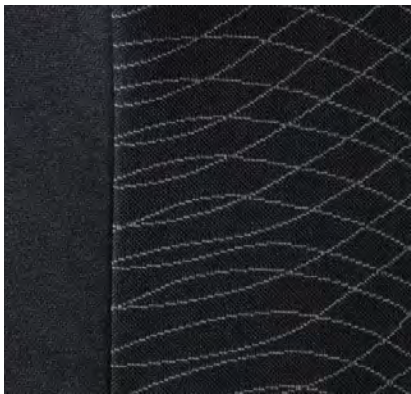
<b>Product benefits</b>	Quick coffee brewing; The customary coffee pads are used; Fits in the beverage holder
<b>Operating voltage</b>	24 Volt
<b>Capacity</b>	Per 1 cup (110 ml or 80 ml)
<b>Pressure</b>	2 bar
<b>Output</b>	140 Watts

Article designation	Vehicle	Part number
Manual coffee maker (for coffee pads)	All model series of trucks	<a href="#">B6 626 0362</a>

# Protective cover, Skyline, Spyder



Skyline



Spyder

Elegant, hard-wearing seat covers for all color samples used in series production.

<b>Product benefits</b>	Hard-wearing and low-maintenance, washable up to 40 °C, barely inflammable
<b>Installation</b>	Easy attachment with zipper
<b>Material</b>	100% polyester

### Skyline, flat-weave fabric design, Atego 4

Article designation	Vehicle	Part number
Standard seat, front left/right (code D1U, D1A, D1M, D1T)	At4	<a href="#">B6 640 1500</a>
Center seat (code D1Z)	At4	<a href="#">B6 640 1502</a>
Swing seat, front left (code D1B)	At4	<a href="#">B6 640 1503</a>
Swing seat, front right (code D1S)	At4	<a href="#">B6 640 1504</a>
Comfort swing seat, front left (code D1C, D1D)	At4	<a href="#">B6 640 1505</a>
Comfort swing seat, front right (code D1P, D1Q)	At4	<a href="#">B6 640 1506</a>

### Spyder, Atego 4

Article designation	Vehicle	Part number
Standard seat, front left/right (code D1U, D1A, D1M, D1T)	At4	<a href="#">B6 640 1510</a>
Middle seat (code D1Z)	At4	<a href="#">B6 640 1512</a>
Swing seat, front left (code D1B)	At4	<a href="#">B6 640 1513</a>
Swing seat, front right (code D1S)	At4	<a href="#">B6 640 1514</a>
Comfort swing seat, front left (code D1C, D1D)	At4	<a href="#">B6 640 1515</a>
Comfort swing seat, front right (code D1P, D1Q)	At4	<a href="#">B6 640 1516</a>

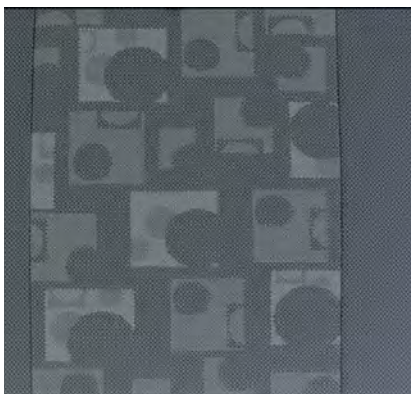
Seat covers, series design



# Protective cover, Brasao, series design



Brasao



Series design At3, At2, Ax2

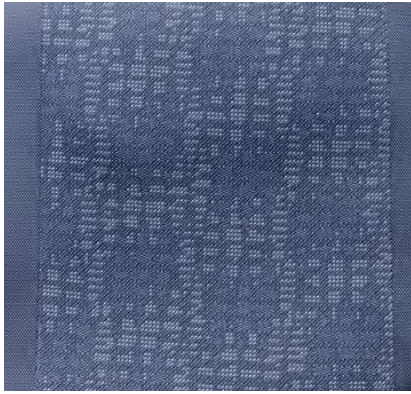
Elegant, hard-wearing seat covers for all color samples used in series production.

<b>Product benefits</b>	Hard-wearing and low-maintenance, washable up to 40 °C, barely inflammable
<b>Installation</b>	Easy to attach with zipper

Brasao		
Article designation	Vehicle	Part number
Grammer suspension seat, front left (code SH1/SH5/SH6)	At3	<a href="#">B6 640 1171</a>
Grammer suspension seat, front right (code SH2/SH7)	At3	<a href="#">B6 640 1172</a>
Isri suspension seat, integrated head restraints, front left (code S18/SE1/SG1)	At3	<a href="#">B6 640 1173</a>
Isri suspension seat, integrated head restraint, front right (code S07/SF7)	At3	<a href="#">B6 640 1174</a>
Grammer suspension seat, front left (code SH1)	At3	<a href="#">B6 640 1252</a>
Grammer suspension seat, front right (code SH2)	At3	<a href="#">B6 640 1253</a>
Isri suspension seat, with detachable head restraints, front left	At2, Ax2	<a href="#">B6 640 1254</a>
Isri suspension seat, with detachable head restraint, front right (code SF0/SF1)	At2, Ax2	<a href="#">B6 640 1255</a>
Default seat of B-pillar seatbelt, fixed seat (code SG1/SG2)	At2, Ax2	<a href="#">B6 640 1256</a>
Center seat	At2, Ax2	<a href="#">B6 640 1257</a>
Isri, integrated head restraint, B-pillar belt guide, front left/front right	At2, Ax2	<a href="#">B6 640 1258</a>

Series design, Atego 3, Atego 2, Axor 2		
Article designation	Vehicle	Part number
Grammer suspension seat, front left (code SH1/SH5/SH6)	At3	<a href="#">B6 640 1160</a>
Grammer suspension seat, front right (code SH2/SH7)	At3	<a href="#">B6 640 1161</a>
Isri suspension seat, front left (code SE1)	At3	<a href="#">B6 640 1162</a>
Isri suspension seat, front right (code SG2)	At3	<a href="#">B6 640 1163</a>
Folding seat, front right (code SF2/SF1)	At3	<a href="#">B6 640 1164</a>
Function seat/folding seat, front right (code SF0/SF1)	At3	<a href="#">B6 640 1165</a>
Isri suspension seat, with belt retractor, front left	At2, Ax2	<a href="#">B6 640 1237</a>
Isri suspension seat, with belt retractor, front right (code SF0/SF1)	At2, Ax2	<a href="#">B6 640 1239</a>
Default seat of B-pillar seatbelt, fixed seat (code SG1/SG2)	At2, Ax2	<a href="#">B6 640 1242</a>
Center seat with lap belt	At2, Ax2	<a href="#">B6 640 1243</a>

# Protective cover, series design Axor 1, Atego 1



Series design, Axor 1

Elegant, hard-wearing seat covers for all color samples used in series production.

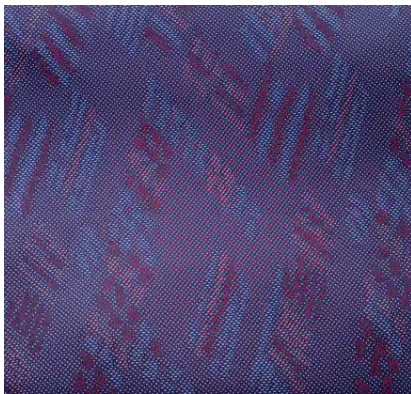
<b>Product benefits</b>	Hard-wearing and low-maintenance, washable up to 40 °C, barely inflammable
<b>Installation</b>	Easy attachment with zipper
<b>Material</b>	100% polyester

### Series design, Axor 1

Article designation	Vehicle	Part number
Standard seat, front left	Ax1	<a href="#">B6 640 1223</a>
Grammer suspension seat, front left (code D1B)	Ax1	<a href="#">B6 640 1225</a>

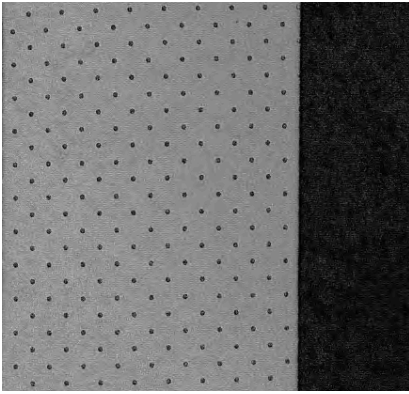
### Series design 5C20, Atego 1

Article designation	Vehicle	Part number
Grammer suspension seat, front left (code D1B)	At1	<a href="#">B6 640 1201</a>
Isri, front left	At1	<a href="#">B6 640 1202</a>
Isri, front right	At1	<a href="#">B6 640 1203</a>
Grammer, from 06/2000, front left	At1	<a href="#">B6 640 1204</a>
Grammer, from 06/2000, front right	At1	<a href="#">B6 640 1205</a>
Center seat	At1	<a href="#">B6 640 1206</a>
Grammer, from 07/2000, front left	At1	<a href="#">B6 640 1209</a>
Grammer, from 07/2000, front right	At1	<a href="#">B6 640 1210</a>
Isri seat, left front	At1	<a href="#">B6 640 1217</a>
Isri seat, front right	At1	<a href="#">B6 640 1218</a>
Isri seat, front right	At1	<a href="#">B6 640 1219</a>
Isri seat, head restraint	At1	<a href="#">B6 640 1220</a>



Series design 5C20

## Protective covers, PVC reinforced door sill, microfiber velours



Gray/black

Perfect protection and maximum comfort: The protective covers protect the seats from wear, damage and contamination. Furthermore, they are wonderfully comfortable to sit on. For all standard seats.

<b>Product benefits</b>	Best seating comfort through breathable textile covers and at the same time, maximum protection of the padding against increased wear due to frequently getting in and out; PVC-reinforced entrance door sills; highly robust and surface washable; hard-wearing and easy to maintain; washable up to 40°C; barely inflammable
<b>Installation</b>	Easy to attach with zipper
<b>Material</b>	100 polyester

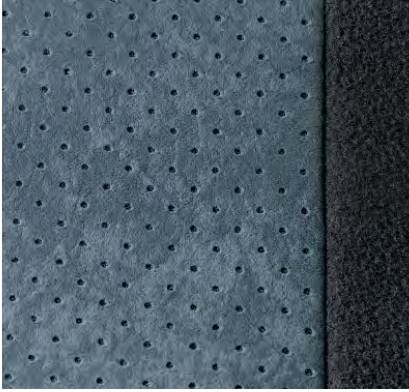
### With PVC-reinforced edge on entry side, gray/black

Article designation	Vehicle	Part number
Isri suspension seat, front left (code D1B)	At4	<a href="#">B6 640 1528</a>
Isri comfort suspension seat, front left (code D1C, D1D)	At4	<a href="#">B6 640 1529</a>
Isri standard seat, front left/right (code D1U, D1A, D1M, D1T)	At4	<a href="#">B6 640 1530</a>

### Microfiber velour, gray / black

Article designation	Vehicle	Part number
Standard seat, front left/right (Code D1U, D1A, D1M, D1T)	At4	<a href="#">B6 640 1520</a>
Middle seat (Code D1Z)	At4	<a href="#">B6 640 1522</a>
Suspension seat, Isri, Grammer, front left (Code D1B)	At4	<a href="#">B6 640 1523</a>
Isri suspension seat, front right (code D1S)	At4	<a href="#">B6 640 1524</a>
Isri comfort suspension seat, front left (code D1C, D1D)	At4	<a href="#">B6 640 1525</a>
Isri comfort suspension seat, front right (code D1P, D1Q)	At4	<a href="#">B6 640 1526</a>

## Protective cover, microfiber velours



Gray/gray



Red/gray

Perfect protection and the best comfort: The seat covers protect the seats against wear, damage and dirt. They also impressive by providing pleasant comfort when sat on. Simple and non-slip assembly.

<b>Product benefits</b>	Hard-wearing and easy to maintain; washable up to 40°C; barely inflammable
<b>Installation</b>	Easy attachment with zipper
<b>Material</b>	Microfiber velour

### Microfiber velour, gray/gray

Article designation	Vehicle	Part number
Grammer suspension seat, front right (code SC2)	At3, At2, Ax3, Ax2	<a href="#">B6 640 1247</a>
Isri suspension seat, front right (code SG2)	At3, At2, Ax3, Ax2	<a href="#">B6 640 1248</a>
Function seat/folding seat, front right (code SF0/SF1)	At3, At2	<a href="#">B6 640 1249</a>

### Microfiber velour, red/gray

Article designation	Vehicle	Part number
Grammer suspension seat, front left (code SH1 /SH5)	At3, At2, Ax3, Ax2	<a href="#">B6 640 1303</a>
Grammer suspension seat, front right (code SH2 /SH7)	At3, At2, Ax3, Ax2	<a href="#">B6 640 1304</a>
Isri suspension seat, front left (code SG1)	At3, Ax3	<a href="#">B6 640 1309</a>
Isri suspension seat, front right (code S07/SF7)	At3, Ax3	<a href="#">B6 640 1310</a>

## Seat covers for workshop



[B6 640 1177](#)

Excellent protection: The protective covers are easy to fit and can be removed again with the flick of a wrist. Practical protective covering for seats for workshop operations.

<b>Product benefits</b>	Dirt, oil and water-repellent; barely inflammable; easy to wash; sanforized (no shrinkage when washed)
<b>Version</b>	Front left/right

Article designation	Vehicle	Part number
Protective Workshop seat covers	For all truck model series	<a href="#">B6 640 1177</a>

## Back and neck supports



[B6 753 0140](#)



[B6 753 0141](#)

Seating accessories

### Sitback back supports

The Sitback backrest offers comfort and effective relief for the lumbar spine. Individual setting with pneumatic operation.

**Product benefits** To support an ergonomic sitting posture; can be individually adapted to the driver

**Material** Fabric

**Installation** Mounting with two brackets between seat cushion and backrest on seat

Article designation	Vehicle	Part number
Sitback Air back cushion	For all model series	<a href="#">B6 753 0140</a>

### Sitback neck supports

The neck cushions for all seats with an integrated head restraint ensure a relaxing posture. In addition, they act as additional padding to the existing head restraints.

**Product benefits** Ergonomic design; extra comfort

**Material** Fabric

**Installation** Easy attachment with velcro strip

Article designation	Vehicle	Part number
For integral seats (integrated head restraint) - also suitable for passenger cars	For all model series	<a href="#">B6 753 0141</a>
For attachable head restraints - also suitable for passenger cars	For all model series	<a href="#">B6 753 0142</a>



# MercedesServiceCard

The Mercedes ServiceCard supports you in speedy and cashless settlement of international breakdown cases by Mercedes-Benz Service24h. In addition to this, the Mercedes-Benz workshop network is also available to you without having to exchange cash with the Mercedes ServiceCard.

Advantages at a glance:

- Pan-European, universal acceptance at Mercedes-Benz workshops
- Fueling in a pan-European gas station network
- Settlement of all European toll fees
- Standard and transparent invoicing
- No basic card fee, no minimum spend required, no fees levied when used in Mercedes-Benz network

More information at:

[www.MercedesServiceCard.com](http://www.MercedesServiceCard.com)





# The electrics/ electronics.

Work efficiently.

First-class technology, excellent connections: With accessories from Mercedes-Benz you can get in, drive off and thanks to the state-of-the-art technology, you are safely and reliably underway.





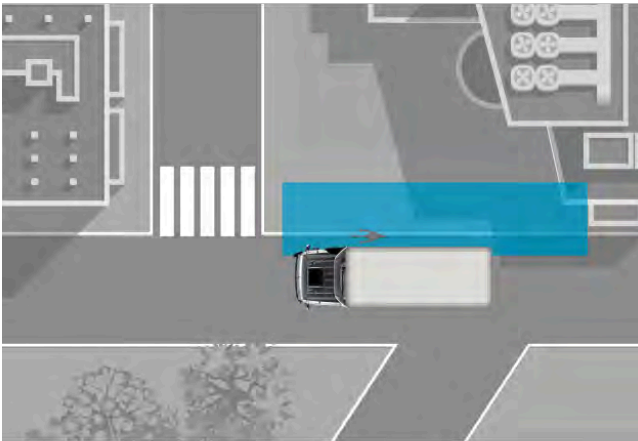
# Basic sideguard assist system



The basic sideguard assist system is an object recording system to avoid collision on the basis of a 24-GHz radar system. The system can increase the safety of unprotected road users when turning over the passenger side of medium and heavy commercial vehicles (> 3.5 t). In this case, the driver is informed and warned both visually and acoustically if a moving object is located in the lateral monitoring zone.

**Product benefits**

Reduction of the risk of accidents with other road users; distinction between moving and stationary objects; the radar-based system does not work in fog, darkness and at dawn/dusk; the radar sensor is insensitive to contamination; proven robust technology



If a cyclist, a pedestrian or another vehicle is in the detection zone, the driver is given a visual warning via the LED display on the A-pillar and can intervene immediately. If the turn signal indicator is active, there is an additional warning tone. With a field of view of up to +/- 85°, the detection zone covers an area approximately 12 m long and 3 m wide next to the vehicle.



<b>Technical data</b>	Radar sensor: frequency range 24 GHz, operating voltage: 9 - 33 volts, dimensions 103 mm x 124 mm x 33 mm, temperature range -40 °C to +85 °C, vibration regulation 25 G, protection class IP69 K; display: power supply via radar sensor, dimensions 50 mm x 27 mm, temperature range -40 °C to +85 °C, protection class IP67
-----------------------	--

<b>Note</b>	The radar sensor is insensitive to environmental influences such as rain, snow and contamination and works day and night. It has a permanent integrated self-test function (BIST). False alarms caused by stationary objects, such as traffic signs or trees, are reduced to a minimum
-------------	--

Article designation	Vehicle	Part number
Basic sideguard assist system (Atego)	At4	<a href="#">B6 684 8650</a>

# Camera systems



B6 782 1275, B6 782 1269



B6 782 1281



B6 782 1280

Provides a better overview: The reversing camera system allows you to see the area directly behind the vehicle, thus increasing safety and preventing accidents.

**Product benefits** Improved accident protection; accurate approaching when reversing and maneuvering; cable and connector systems are hazardous goods transportation compatible; watertight camera housing (protection class IP 69K); integrated heater

**Function** System is automatically activated when the reverse gear is engaged

Article designation	Vehicle	Part number
Reversing camera without overlay	Ax3, Ax2, Ax1, At4, At3, At2, At1	<a href="#">B6 782 1275</a>
Reversing camera with overlay	Ax3, Ax2, Ax1, At4, At3, At2, At1	<a href="#">B6 782 1269</a>
Adapter cable (in combination with code J9J)	At4	<a href="#">B6 753 0171</a>
Multicable 5 m	Ax3, Ax2, Ax1, At4, At3, At2, At1	<a href="#">B6 782 1277</a>
Multicable 11 m	Ax3, Ax2, Ax1, At4, At3, At2, At1	<a href="#">B6 782 1278</a>
Multicable 16 m	Ax3, Ax2, Ax1, At4, At3, At2, At1	<a href="#">B6 782 1279</a>
Multicable 21 m	Ax3, Ax2, Ax1, At4, At3, At2, At1	<a href="#">B6 782 1280</a>
Helix cable	Ax3, Ax2, Ax1, At4, At3, At2, At1	<a href="#">B6 782 1281</a>
Kamera mit 120° Öffnungswinkel	Ax3, Ax2, Ax1, At4, At3, At2, At1	<a href="#">B6 782 1330</a>
Magnetic footrest	Ax3, Ax2, Ax1, At4, At3, At2, At1	<a href="#">B6 782 1331</a>

# SurroundView



B6 782 1267

For a more comprehensive all-round view: This 7" TFT monitor with its high-quality LED backlight and outstanding image quality was especially developed for use in commercial vehicles and offers the advantages of a perfect SurroundView display.

**Product benefits** It can display up to four cameras that are mounted at random places on the vehicle in one monitor image, thus enabling the driver to get a better overview when driving and maneuvering (e.g. in tight driving situations)

**Function** Meets all the high requirements for commercial vehicles such as dust tightness, IP6K5 jet water protection, a -30° C to +85° C temperature range; an integrated control unit for automatic trailer recognition; a brightness sensor for automatic day/night switchover as well as an adjustable overlay for distance visualization; connection of up to four cameras possible; cables of different lengths connect the cameras to the monitor; the buttons on the monitor make it easy to configure

**Package contents** 1 modular SV monitor, multipoint connector connection, sturdy and flexible adjustable monitor holder

Article designation	Vehicle	Part number
7" additional monitor for SurroundView	For all model series	<a href="#">B6 782 1267</a>

# Adapter cable and adapter



B6 753 0151



B6 753 0152



A 000 545 39 84

Adapters/cables/connections

Adapter cable and adapter for power supply between semitrailer tractor and trailer or semitrailer.

**Product benefits** Contact reliability and water-tightness; simple and efficient installation

**Adapter cable** 15-pin (V ADR) plug (connector) in accordance with ISO 12098 (24 V), 7-pin socket in accordance with ISO 1185 (24 V, normal, black) and ISO 3731 (24 V, addition, white)

**Usage** From socket (ISO 12098) on tractor to a separate connector (ISO 1185 and ISO 3731) on trailer/semitrailer

Article designation	Vehicle	Part number
Adapter cable, 24 V, 15-pin to 2 x 7-pin	At4, At3, At2, At1, Ax3, Ax2, Ax1	B6 753 0151
Short adapter, 24 V, 15-pin to 2 x 7-pin, without cable	At4, At3, At2, At1, Ax3, Ax2, Ax1	B6 753 0152
Adapter, 24 V, 15-pin to 2 x 7-pin, with spiral line (code E6E)	At4, At3, At2, At1, Ax3, Ax2, Ax1	A 000 545 39 84

# Trailer socket, 24 V



A 000 540 27 39



A 000 540 38 39

For a secure power supply between the tractor and trailer or semitrailer. The socket supplies, for example, the illumination, rear headlamps or brake lamps with power.

**Technical data** 24 Volt; assignment 5 x 1.5 mm<sup>2</sup> and 2 x 4 mm<sup>2</sup>; 7-pin ABS/EBS (ISO 7638); 450 cm length

Article designation	Vehicle	Part number
Trailer socket 24 Volts, 15-pin	At4, At3, At2, At1, Ax3, Ax2, Ax1	A 000 540 27 39
Trailer socket, 24 V, 7-pin	At4, At3, At2, At1, Ax3, Ax2, Ax1	A 000 540 38 39

## HF adapter, GSM/GPS



B6 782 1133

Perfect connection for new antennas: HF adapter for connection of antennas with FAKRA connection to FME connection in electrical compartment (code EV5).

**Note** FAKRA coding, i.e., can also be used for other devices (e.g. trunk radio, GPS, fax, telephone)

Article designation	Vehicle	Part number
HF adapter GSM for FleetBoard	At1, Ax1	<a href="#">B6 782 1132</a>
HF adapter GPS for FleetBoard	At1, Ax1	<a href="#">B6 782 1133</a>
HF adapter GSM	Ac3, At2, Ax2	<a href="#">B6 782 1264</a>

## Plug and socket, ABS/EBS



B6 753 0158



B6 753 0159

The ABS/EBS plug and mains outlet (certified according to ISO 7638) for the standard cable are ADR/GGVS-compatible. The mains outlet's rear exit is straight.

<b>Product benefits</b>	System specially adapted to the intended use; simple and rational installation; high-quality laminated contacts with crimp connection
-------------------------	---

<b>Technical data</b>	With 9 crimp contact bushes (5 x 1.5 mm <sup>2</sup> , 2 x 4 mm <sup>2</sup> and 2 x 6 mm <sup>2</sup> )
-----------------------	--

<b>Note</b>	Suitable for all systems (e.g. 5-pin with 2 x 6.0 mm <sup>2</sup> , 7-pin with 2 x 4.0 mm <sup>2</sup> , etc.)
-------------	--

Article designation	Vehicle	Part number
ABS/EBS plug	At4, At3, At2, At1, Ax3, Ax2, Ax1	B6 753 0158
ABS/EBS socket	At4, At3, At2, At1, Ax3, Ax2, Ax1	B6 753 0159

Adapters/cables/connections

## Plug and socket, 15-pin



B6 753 0163



B6 753 0164

The plug (certified according to ISO 12098) for the standard cable and the mains outlet (ISO 12098) for the standard and corrugated pipe are ADR/GGVS-compatible. The mains outlet's rear exit is straight.

<b>Product benefits</b>	High-quality laminated contacts with crimp connection; simple and rational installation; contact reliability and water-tightness
-------------------------	--

<b>Technical data</b>	Crimp connections (12 x 1.0 - 1.5 mm <sup>2</sup> and 3 x 2.5 mm <sup>2</sup> )
-----------------------	---

Article designation	Vehicle	Part number
Connector, 15-pin, 24 Volt ADR	At4, At3, At2, At1, Ax3, Ax2, Ax1	B6 753 0163
Socket, 15-pin, 24 V ADR	At4, At3, At2, At1, Ax3, Ax2, Ax1	B6 753 0164

# Jumper cable, 24 V



Perform starting procedure safely: jumper cable with integrated protective circuit to suppress inductive voltage peaks and four completely insulated crocodile clamps in a convenient bag.

**Product benefits** Sturdy vulcanized ribbon conductors with rip-out protection, reduced arcing, corresponds to DIN 72 553, plugs and connectors watertight and vulcanized

**Technical data** 24 V, up to 1000 A, 50 mm<sup>2</sup> wire cross-section, 5 m length

Article designation	Vehicle	Part number
Jumper cable, 24 V	At4, At3, At2, At1, Ax3, Ax2, Ax1	<a href="#">B6 753 0150</a>

## Voltage reduction adapter



B6 753 0167

Versatile: Voltage reduction adapter for the operation of 12 Volt trailers, to be used from a 24 Volt on-board electrical system as short adapter.

<b>Product benefits</b>	Automatic reset in case of overcurrent/ overtemperature; compatible with lamp control devices; correct function of the ABS info module is ensured
-------------------------	---

<b>Usage</b>	From 15-pin 24 V to 13-pin 12 V
<b>Note</b>	Only for bulbs

Article designation	Vehicle	Part number
Voltage reduction adapter	At4, At3, At2, At1, Ax3, Ax2, Ax1	<a href="#">B6 753 0167</a>

## Thermal paper/bulk package of thermal paper



B6 782 1244



B6 782 1243

Printouts on heat-resistant thermal paper remain legible, even after coming into contact with water or engine oil.

<b>Product benefits</b>	Heat resistant, remains legible, even after coming into contact with water or engine oil.
-------------------------	---

<b>Package contents</b>	Packages with 3 rolls each of 8 m or as bulk package with 20 packages with 3 rolls each
-------------------------	---

Article designation	Vehicle	Part number
Single package of thermal paper (3 rolls of 8 m each)	At4, At3, At2, Ax3, Ax2	<a href="#">B6 782 1244</a>
Bulk package of thermal paper (20 packages with 3 rolls each)	At4, At3, At2, Ax3, Ax2	<a href="#">B6 782 1243</a>



## Antennas



B6 782 1320

Always good reception with antennas and antenna accessories for your truck. Your Mercedes-Benz partner is happy to advise you.

Article designation	Vehicle	Part number
Trunked radio system antenna rod	At1, Ax1	<a href="#">B6 682 8569</a>
Dual-band rod GSM 900 MHz network/GSM-1800 network	At1, Ax1	<a href="#">B6 682 8572</a>
Shortened AM/FM antenna rod, 234 mm, for Thermoking body	At4	<a href="#">B6 782 1320</a>
GSM/GPS FleetBoard/navigation antenna, line length 1450 mm	At3, At2, At1, Ax3, Ax2, Ax1	<a href="#">A 002 827 20 01</a>
Antenna assembly, CB radio, 60°, 450 mm, line length 3500 mm	At3, At2, At1, Ax3, Ax2, Ax1	<a href="#">A 003 820 25 75</a>
Antenna assembly, CB radio, 10°, 450 mm, line length 3500 mm	At3, At2, At1, Ax3, Ax2, Ax1	<a href="#">A 003 820 24 75</a>
Antenna assembly, radio, 60° phone, line length 2,050 mm	At3, At2, Ax3, Ax2	<a href="#">A 003 820 23 75</a>
Antenna assembly, radio 60° telephone, line length 1150 mm	At3, At2, At1, Ax3, Ax2, Ax1	<a href="#">A 003 820 22 75</a>

## Bluetooth CD radio



A 004 820 54 86

Excellent infotainment: If required, other mobile devices such as MP3 players can also be connected. Bluetooth CD radio with integrated hands-free system via Bluetooth interface. The driver can thus keep his/her hands on the steering wheel.

**Product benefits**      Functionality, reception and sound quality are completely guaranteed, clean processing, without damage to the interior equipment through retrofitting of the code EU2, easy operation of the CD radio

**Technical data**      Radio with 4 wavebands: MW, FM, LW, SW; CD player (Audio CD, MP3, WMA formats); CAN interface for display in instrument cluster; access to address book (with code EU2) via MFL - display in instrument cluster

**Operating voltage**      24 V

Article designation	Vehicle	Part number
Bluetooth CD radio	At3, At2, At1, Ax3, Ax2, Ax1	A 004 820 54 86

# Spare bulb boxes

Small and large bright spots: contain all required reserve lamps and fuses in a stable box.

<b>Product benefits</b>	Stored safe and compact in a handy box; put together in a way that is model series independent
<b>Package contents</b>	All required spare bulbs for the main headlamps, front fog lamps, turn signal lamps, interior illumination, etc.
<b>Note</b>	Important: Many European countries mandate that you have this equipment in your vehicle when traveling



B6 683 0022, B6 683 0021

Article designation	Vehicle	Part number
Spare bulb box, H7, small	At4, At3, At2, At1, Ax3, Ax2, Ax1	<a href="#">B6 683 0022</a>
Spare bulb box, H7, large	At4, At3, At2, At1, Ax3, Ax2, Ax1	<a href="#">B6 683 0021</a>
Spare bulb box, H4, small	At4, At3, At2, At1, Ax3, Ax2, Ax1	<a href="#">B6 683 0023</a>

**Content of spare bulb boxes**

Spare bulb box, H7, small	Spare bulb box, H4, small	Spare bulb box, H7, large		Content of spare bulb boxes
-	-	1x	H1	High-beams
1x	-	2x	H7 LHD	Low beams
-	1x	-	H4	Low beams
2x	2x	3x	P21W	Rear: Turn signal lamps, tail lamps, brake lights
1x	1x	3x	R10W	License plate number, side position, tail lights
1x	1x	1x	PY21W	Front turn signal
-	-	1x	C5W	Marking at left, right front on wind deflector
1x	1x	2x	W5W	Entrance standing lights
1x	1x	2x	Fuse 10A	
1x	1x	2x	Fuse 15 A	
1x	1x	1x	Fuse 20 A	
1x	1x	1x	Fuse 25 A	

# CB radio universal, 12 Volt



B6 683 0016

At home on every channel: Universal CB radio with 3 switchable national frequency tables. With ASC (automatic smoke barrier) and microphone with up and down buttons for selecting the channel.

**Technical data** 3 switchable national frequency tables: 80 channels FM, 4 W/12 channels AM, 1 W/40 channels FM, 4 W/40 channels AM, 1 W/40 channels FM, 4 W/CEPT

**Operating voltage** 12 V

Article designation	Vehicle	Part number
Spare microphone for universal CB radio	At4, At3, At2, At1, Ax3, Ax2, Ax1	<a href="#">B6 683 0016</a>

CB radios





## Worldwide parts supply: Global Logistics Center

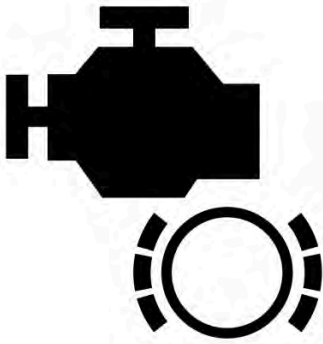
The hub of After-Sales logistics at Mercedes-Benz is the Global Logistics Center in Germersheim. In combination with the logistics centers all over the world, the central depot provides for a speedy and smooth supply of service operations with parts and accessories for commercial vehicles and cars from Mercedes-Benz, smart and FUSO. On a storage area of around 1.2 million square meters it stocks almost half a million different parts ready for immediate requisition.



Advantages at a glance:

- Large range of products: More than 800,000 parts available for ordering, roughly 500,000 parts in store
- High parts availability
- Parts availability many years after series-production discontinuation
- Fast supply of service operations worldwide through a global logistics network

## High Performance Engine Brake (code M5V)



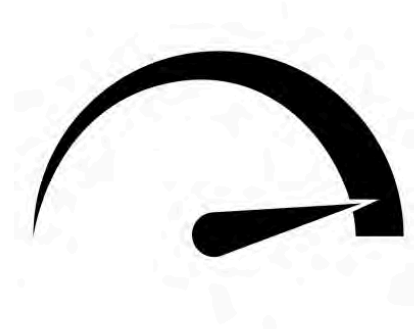
Increase the braking force of your engine brake and thus improve the wear-free braking. Up to 85% of the braking work can be performed with the High Performance Engine Brake.

**Product benefits** Up to 37% more brake force compared to the standard engine brake (that is up to 130 kW more braking power in the OM473)

**Note** The standard engine brake (code M5U) is a prerequisite for retrofitting the High Performance Engine Brake.

Article designation	Vehicle	Part number
Data medium for retrofitting High Performance Engine Brake (code M5V) model designation 967	At4	<a href="#">A 000 827 77 59</a>

## Drive program "power" (code G0V)



The "power" transmission mode is designed for on-road use in long-distance haulage and supports a very nimble driving style.

**Product benefits** Individual, optimal adaptation of drive program for use thanks to two transmission modes that support both a fuel-efficient and nimble driving style; relieving the driver of driving routines with automated functions for disengaging the clutch, shifting up or down, and engaging the clutch; reduction of maintenance and operating costs and protection of entire drivetrain with optimized clutch operation and gear change sequences

**Property** The rotational speeds will be increased by 100 rpm compared to standard mode for all shift operations

**Validity** The transmission mode is optimized for use with a gross vehicle weight of up to 150 t

**Note** Requirement code G5G (Mercedes PowerShift 3)

Article designation	Vehicle	Part number
Data medium for retrofitting drive program "power" (code G0V)	At4	<a href="#">A 000 827 65 59</a>

## "Economy" drive program (G0U)



The "economy" transmission mode is designed for on-road use in long-distance haulage and supports a driving style that is extremely fuel-efficient and preserves the vehicle.

**Product benefits** Supported by an extremely fuel-saving and resource-conserving driving style; relieves the driver of shifting routines through automated functions - disengaging the clutch, shifting and engaging the clutch; reduction of maintenance and operating costs through optimized clutch and gear changes to conserve the entire drivetrain

**Property** When the cruise control is activated, the maximum speed is limited to 85 km/h, the kickdown function is suppressed and EcoRoll mode is permanently enabled

**Validity** The drive program has been optimised for use with a total vehicle weight of up to 44 t

Article designation	Vehicle	Part number
Data medium for retrofitting drive program "economy" (code G0U)	At4	<a href="#">A 000 827 64 59</a>



## Drive program "fire-service" (code G0X)



The “fire service” drive program has been designed for use by the fire department and supports the acceleration and dynamics of the vehicle.

**Product benefits**

Permanent, dynamic drive program adapted to the requirements of the fire brigade with complete utilization of engine power and torque without considering the fuel consumption; supports a fuel-efficient driving style by selecting the standard program via the menu; automated functions for disengaging the clutch, shifting up or down, and engaging the clutch relieve the driver of routine driving decisions; reduction in maintenance and operating costs and protection of entire drivetrain with optimized clutch operation and gear change sequences

<b>Property</b>	The switching point selection, the gearshift dynamics are shifted in such a way that the maximum dynamic thrust force is achieved in every driving situation . Thus , specifications for fire-fighting vehicles are thus fulfilled as per DIN 1846-2
<b>Validity</b>	The drive program has been optimised for use with a total vehicle weight of up to 44 t
<b>Note</b>	Special functions which are not required for airfield fire engines are not contained

Article designation	Vehicle	Part number
Data medium for retrofitting drive program “fire-service” (code G0X)	At4	<a href="#">A 000 827 70 59</a>

## Drive program "municipal" (code G0S)



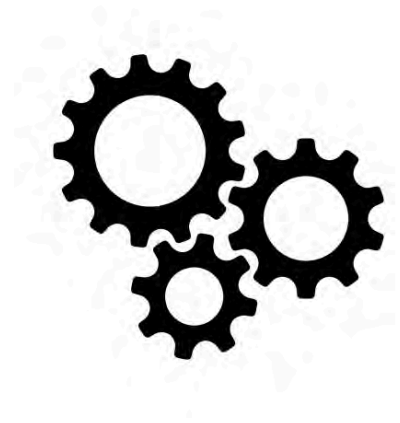
With the drive program "municipal" for waste disposal vehicles, the drive programs standard and special automation can be selected. The drive program "municipal" contains the following adaptations: parameterized start-off gear intended for collection: second gear, EcoRoll, creeping and clutch strain warning are deactivated ex works.

**Product benefits** The 'municipal' drive program is specially adapted to the requirements of the waste management sector

**Note** Requirement code G5G (Mercedes PowerShift 3)

Article designation	Vehicle	Part number
Data medium for retrofitting drive program "municipal" (code G0S)	At4	<a href="#">A 000 827 68 59</a>

## Vehicle-specific parameter data



No customer request is left unfulfilled: Through a newly developed operation process, the customer is offered almost all conversions and retrofits, which meet vehicle-specific parameter data.

**Product benefits** Higher profitability/efficiency; support to ensure adherence to existing legal regulations, increased comfort; value retention and appreciation of your truck; higher safety in road traffic

**Note** In order to be able to present the customer with a vehicle-specific offer, the retail company shall prepare an XSF ticket that contains the vehicle identification number and the desired retrofit code. Furthermore, the retail company receives a compilation for the parameter data and a list of the required parts within 72 hours

Article designation	Vehicle	Part number
Retrofitting parameter	At4	<a href="#">A 000 827 75 59</a>

# FMS interface fleet management system (code E4B)



The standardized interface is an electronic communication connection for fleet management systems of different manufacturers. Via this interface, vehicle-internal CAN data is translated into the standardized SAE J1939 format and forwarded to the respective system. The data content of the interface is precisely defined and coordinated between the manufacturers. This allows different fleet management systems to easily use the determined vehicle data of the specified manufacturers, irrespective of the brand.

**Product benefits**

Simplified use and expanded range of services for fleet management systems through standardized interface; reduced costs because interventions in vehicle electronics or new parameterization are not necessary; high functionality and simplified technical processes by using a standard fleet management system in a mixed vehicle fleet

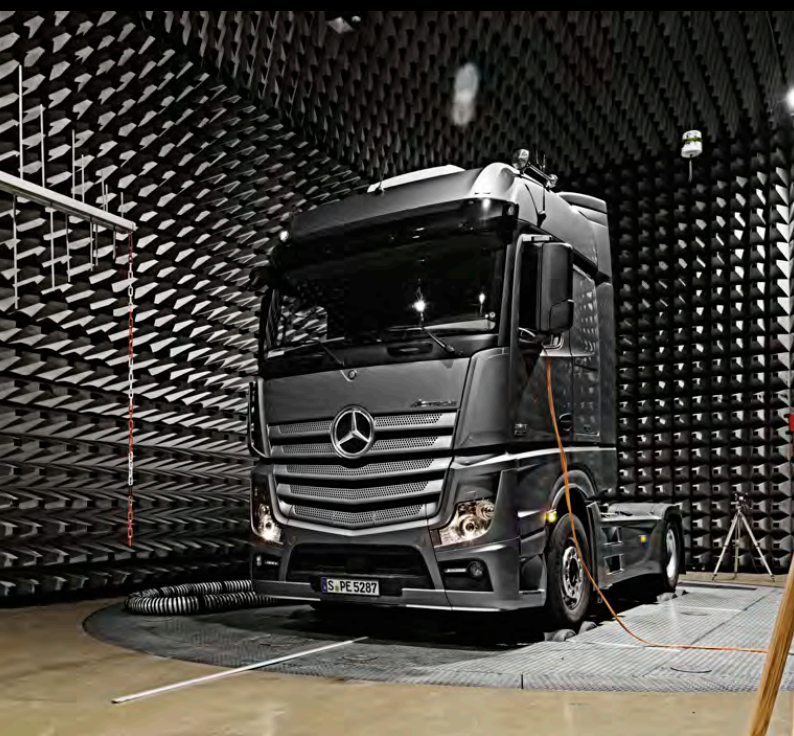
**Property**

Depending on the vehicle version, the following data can be retrieved as a maximum: cruise control, clutch, power take-off status, accelerator pedal position, total fuel consumption, current fuel consumption, fuel tank fill level, engine rpm, axle load of individual axles, vehicle gross weight, total engine operating hours, vehicle identification number, software identification number, total vehicle kilometer reading, next regular maintenance service, tachograph information, vehicle speed (tachograph), engine coolant temperature, standard FMS information, engine partial load ratio at current vehicle speed

**Package contents**

3 x A 013 545 76 26 MCP contact socket for the power supply of the FMS device from the SCA/SSAM, 2 x A 013 545 44 26 MQS contact socket for the CAN pick-up at the CGW control unit, 1 x CD for software adaptation

Article designation	Vehicle	Part number
Retrofitting parameter	At4	<a href="#">A 000 827 73 59</a>



# Product tests

Tested and approved by Mercedes-Benz.

With Mercedes-Benz Genuine Accessories, tested quality is coming onto the road: Each product must show in tough tests that it will withstand the daily demands in and on a truck. And this is already happening during new car development – something only Mercedes-Benz can offer you. Only then will the products come on the market as Mercedes-Benz Genuine Accessories. This is why you can always rely on high quality and longevity, which makes your work more pleasant, more comfortable and more efficient. On the following pages, we will present you three of our product tests in further detail – and the great advantages you are benefitting from.



## Electromagnetic compatibility testing

**The electromagnetic compatibility test: For interference-free working and communicating.**

Electronic devices are thoroughly tested for electromagnetic compatibility (EMC). The test is conducted based on two criteria: immunity to interference and emitted interference. On the one hand, this ensures the interference-free operation of the accessory product. On the other hand, you can trust that there will be no interference with electronic devices or in radio frequencies from Mercedes-Benz Genuine Accessories.

---

**Your advantages at a glance:**

---

- Interference-free operation of the electronic devices in the vehicle
- More range for your radio – enjoy longer, undisturbed reception of your favorite station
- Interference-free operation of vehicle-internal control units and systems



EMC test in a laboratory that is especially shielded against external electromagnetic interferences.

## Product tests

# Durability test

The interaction of accessories and vehicle is tested in the durability test. Hydropulse test stands and rough road tracks simulate pot holes and road conditions found worldwide. By varying the vehicle speed and vehicle load, a wide variety of work assignments are simulated. Therefore, the accessory product is tested over a longer period of time under the load conditions found in real life. In the crash test, the Mercedes-Benz Genuine Accessories are subjected to the hardest test. This test analyzes the behavior during an accident – passive safety must be ensured even under these extreme conditions.

---

### Your advantages at a glance:

---

- Longevity thanks to sturdy and high-quality material
- Accessories that are optimally geared towards the vehicle
- Tested and approved for the demands of everyday life



Bending and breaking test: Roof lamp brackets in the crash test.



Hydropulse test stand for simulating pot holes and rough road conditions.

---

# Winter and summer testing

Winter and summer pose extreme challenges for the vehicle and material. This is why Mercedes-Benz Genuine Accessories must ensure optimum function at all times in strict trials at temperatures of  $-40\text{ }^{\circ}\text{C}$  to  $+40\text{ }^{\circ}\text{C}$ . Winter testing is performed in Scandinavia and summer testing is performed in Southern Europe, in each case on special vehicle testing sites and circuits. In addition to different road surfaces, vehicles must withstand inclines and as well as endurance tests under the maximum vehicle load.

---

### Your advantages at a glance:

---

- Optimum function even at extreme temperatures
- Long service life even at maximum vehicle loads
- A consistently high quality is ensured under all conditions



Test vehicles of the Mercedes-Benz winter testing in Scandinavia.



## The new service innovation Mercedes-Benz Uptime

With intelligent networking of vehicles, Mercedes-Benz Service and your shipping company, Mercedes-Benz Uptime is setting new benchmarks. This enables significantly increased predictability of workshop visits and a greater availability of vehicles.



Your advantages at a glance:

- Avoiding immobility cases: preventing breakdowns and reducing organizational stress
- Efficient management of repairs and maintenance: minimizing workshop visits and non-operational times in the workshop
- Real-time support for repair measures: avoiding unnecessary workshop visits and repair costs

More information at:

[www.mercedes-benz.com/uptime](http://www.mercedes-benz.com/uptime)



# Index

## "

"Economy" drive program (G0U) ..... 64

## A

Adapter cable and adapter ..... 52

Air horns..... 10

Air pressure gage ..... 20

Antennas ..... 57

Automatic tire chains .....22, 23

## B

Back and neck supports..... 46

Basic sideguard assist system ..... 49

Bedding sets .....33, 34

Bluetooth CD radio..... 58

## C

Camera systems ..... 50

CB radio universal, 12 Volt ..... 60

Chrome applications, door .....4

## D

Drive program "fire-service" (code G0X) ..... 65

Drive program "municipal" (code G0S)..... 66

Drive program "power" (code G0V) ..... 63

Durability test ..... 71

## E

Electromagnetic compatibility testing ..... 70

Entrance emblem..... 13

## F

Fifth wheel couplings ..... 24

Floor mats ..... 36

FMS interface fleet management system  
(code E4B) ..... 68

## H

HF adapter, GSM/GPS..... 53

High Performance Engine Brake (code  
M5V) ..... 62

## J

Jumper cable, 24 V ..... 55

## K

Key ring ..... 31

## L

LED reading lamp..... 32

Light alloy wheels..... 18

Lockable tank cap (code K5M) ..... 26

## M

Manual coffee maker, 24 Volt (for pads) ..... 39

Mobile LED traffic hazard management light  
set ..... 27

Molton overlays and fitted sheets ..... 35

Mud flap ..... 19

## P

Plug and socket, 15-pin..... 54

Plug and socket, ABS/EBS ..... 54

Protective cover, Brasao, series design.....	41
Protective cover, microfiber velours.....	44
Protective cover, series design Axor 1, Atego 1 .....	42
Protective cover, Skyline, Spyder.....	40
Protective covers, PVC reinforced door sill, microfiber velours .....	43

## R

Refrigerator boxes.....	38
Ribbed floor mats .....	37
Roof lamp bracket.....	5
Roof lamp bracket, additional headlamps .6, 7, 8	
Roof lamp bracket rotating beacon.....	9

## S

Seat covers for workshop.....	45
Side window wind deflector.....	28
Spare bulb boxes .....	59
Stainless steel front bar .....	12

Stainless steel rear axle cover caps.....	14
Stainless steel steps .....	11
Stainless steel wheel nut caps.....	15, 16
Stainless steel wheel nut protective caps ...	17
Stowage tray.....	31
SurroundView .....	51

## T

Thermal paper/bulk package of thermal paper.....	56
Trailer socket, 24 V .....	52
TruckCare .....	25

## V

Valve extensions .....	19
Vehicle-specific parameter data .....	67
Voltage reduction adapter .....	56

## W

Windshield wipers with telescoping handle .	21
Winter and summer testing .....	71





Regarding the information in this catalog: after the copy deadline of this publication, 30.09.2020, modifications may have been made to the product. The manufacturer reserves the right to make design and form changes, deviations in color as well as changes in scope of delivery during the delivery period if the changes or deviations are reasonable for the buyer keeping in mind the interests of the seller. If the salesperson or the manufacturer uses symbols or numbers to identify the order or the ordered object of purchase, no rights may be derived solely from these. The illustrations and texts may also show accessories and special equipment which are not part of the standard scope of supply. Color deviations are due to the printing process. The illustrations shown are only exemplary and do not necessarily depict the actual state of the original vehicles. The appearance of the original vehicles can vary from these illustrations. Subject to changes. This publication may also contain models and customer care services which are not offered in certain countries. This catalog is used internationally. However, information given regarding statutory regulations, legal requirements and tax codes applies only to the Federal Republic of Germany as known at the copy deadline of this catalog. Please ask your Mercedes-Benz Truck salesperson about the regulations and effects valid in your country and the last binding publication status and its effects. From November 2019 onwards, we will advise you in the sale and service through Daimler Truck AG. Information about your rights to information, rectification, complain and use your data as well as the data protection controller can be found at <http://www.mercedes-benz.de/datenschutz>.

[www.mercedes-benz-trucks.com](http://www.mercedes-benz-trucks.com)